

# the gathering monthly

*Korean Mary & Jesus  
mosaic in Nazareth.*



## 2009 october

### prayers

- *Our thanksgiving tables-may we love on people in our community*
- *Several families with loved ones fighting physical battles-travel details and balance with life in St Bernard*
- *More work groups to come help work on the building*
- *Wisdom in starting new small groups*



*City lights in Jerusalem and plating a tree at a Holocaust memorial.*



### *Matt travels to Israel*

A once in a lifetime chance came calling earlier this year and Matt was able to travel to tour the Holy Lands with a few friends and scholars. The pictures and insights he captured are numerous while traveling to many cities and historical sites. When he was in Nazareth, there was a display depicting Jesus from many different heritages. Seeing depictions of Jesus in different cultures begs the question--do we make Jesus look like us or have we been made in His image? And more personally, do we want to look like Him?

### *Gathering Youth*

A small youth group for middle and high school students began a few weeks back and has grown! They are learning about the "upside down kingdom"--teaching them we shouldn't just think that God is only here for our benefit, protection, and blessing. Instead, it is our responsibility to serve, honor, and revere God. What an interesting vantage point to start teaching young believers!

### praises

- *Tremendous Israel trip for Matt!*
- *Ladies study on Esther going quite well*
- *Signups for ladies retreat going great!*

### up next...

- *More details coming about specific construction materials needed*

### **"The Gathering Place"**

This was a dynamic month of progress at the building!! Folks from IN, MN, and IA came for specific projects--and what a difference they all made! The pictures show some pieces of progress:

- A new garage door going in
- Metal stud framing
- Exterior fire exits (3 new doorways)
- Main electrical equipment-1200 amp main disconnect panel

Framing is 85% finished! The electrical rough-in has begun and plumbing starts soon. These are some great strides and if you have any experience in these areas please let us know! Hopefully dry-wall starts going up in January!



The Gathering  
P.O. Box 125  
Chalmette, LA 70044  
thegatheringcc.com

# THE JOHNSON *Journals*

SERVING CHRIST IN  
NEW ORLEANS

## Nora Amelia Johnson

We're thrilled to announce the birth of our daughter on Oct. 29th! Everything went very well--we came home after 24 hours as mom & baby were making good progress. The little one came in at 8 lb. 11 oz. & 21 inches long. As I'm writing this she is already a week old & growing well. Our family here has been generous & kind with caring for our family, bringing gifts & dinners over, and they've planned a shower for Shauna & Nora in a few weeks. Everly is doing well adapting, too. She likes to call Nora "My baby" which the Dr. said is a great sign.

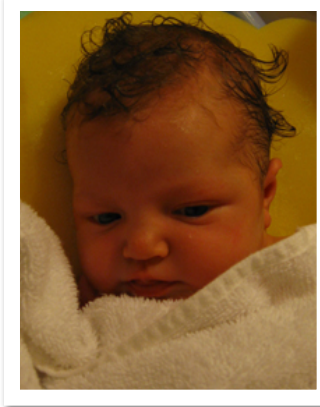


Everly enjoyed Grandma & Grandpa visiting which meant a few trips for ice cream!

## Everly's Van

A Lutheran organization that had been working in New Orleans since Katrina finished their ministry this last month and was selling off their vehicles and tools. We decided (after much prayer!) to make an unreasonably low bid on a 2004 Dodge Caravan with low miles--we weren't really looking for a new vehicle but knew that this would be a great deal if we got it! A week later we found out that we had won

the van and believe that it was something God wanted us to have! We were blessed to sell our Camry for more money, paying for our title, plates, a new window motor, and more. As with most things, Everly calls it *her* van. :)



## Financial-end of year is coming...

Every once in awhile someone will call and say they notice our financial reports have ups and downs. Well-this next month we will be making decisions about our health insurance as well as phone service. These seem like two areas where we could save money. We do know many people desire to find "end of the year" recipients for a write-off or a special gift, so keep us in mind for that! We see these things happening and are moved. **Thank you--for giving and praying over this life we have here.**

## contact

3404 Plaza Dr.  
Chalmette, LA 70043  
[www.asejohnson.blogspot.com](http://www.asejohnson.blogspot.com)

[aaronj@thegatheringcc.com](mailto:aaronj@thegatheringcc.com)  
504-610-7779  
[shaunaj@thegatheringcc.com](mailto:shaunaj@thegatheringcc.com)  
504-610-5999

## FINANCES

### SEPTEMBER EXPENSES

Salary	\$1,500
Medical	742.28
Housing	282.06
Retirement	200.00
Office	100.00
Phones	152.00
Postage	2.78
Travel	204.57
<b>TOTAL</b>	<b>3,183.69</b>

### RECEIPTS

Individuals	3,670
Churches	1,850
<b>TOTAL</b>	<b>5,520</b>

Send support to:  
4635 Blue Marlin Way  
Indianapolis, IN 46239

Checks should be made out to  
Team Expansion and are tax-  
deductible.